



At a Glance

Test Processes efficient and reliable

Hyper

From Measurement
to Knowledge

Test

BOOST

Data quality and efficiency in testing with HyperTest Boost

HyperTest® Boost is a web-based test data and lab management system that helps you reliably cover your entire test process – from individual tests to validation and verification tests. The modular structure of the low-code platform allows you to easily configure and optimize your individual workflows for all phases of the testing process.

HyperTest Boost provides you with a comprehensive overview of all information, from the test request to the commissioning, execution and final report. By using this standardized IT solution, you can save costs and resources, while optimizing the procedures and documentation of your testing process.

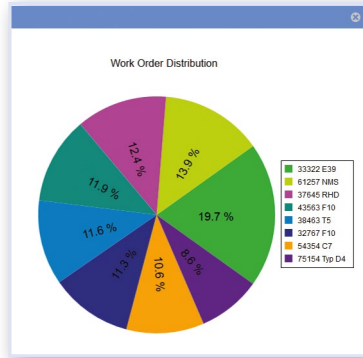
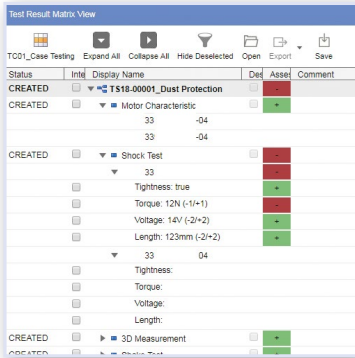
werum
SOFTWARE & SYSTEMS

Is your testing process ready?

With increasing digitalization and globalization, your test management needs are growing rapidly. As a result, verification and validation through physical testing has become increasingly complex. At the same time, digitalized, efficient and safe test processes in product development have long been a key success factor for modern companies.

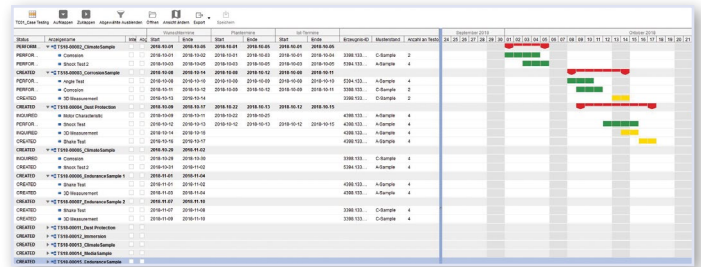
With HyperTest Boost you will:

- Avoid regulatory non-compliance
- Eliminate waste of resources and costs
- Prevent product release delays



HyperTest Boost is designed to improve the quality and efficiency of your test processes. Whether you are a mid-size company or a global player, our test data and lab management system puts you in a strong position:

- Manage and document test procedures and results: With HyperTest Boost, you can centrally manage your test cases and automatically generate documents to ensure compliance.
- Test automation: HyperTest Boost automates your processes, saving you time and resources while improving the quality of your documentation.
- Increase flexibility and scalability: HyperTest Boost makes your processes more flexible and scalable, allowing you to respond more quickly to customer and regulatory requirements.



Test planning

Capture, optimize, and document your test plans accurately.

The combination of planning, coordination, monitoring, and documentation makes the entire test lifecycle traceable and increases agility.

Test execution

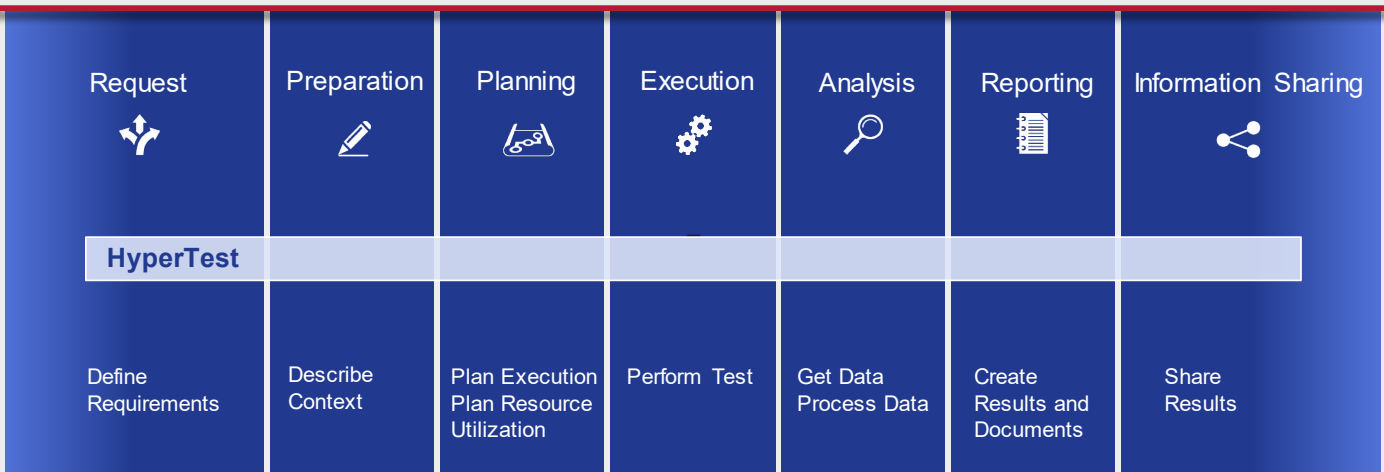
Keep track of all activities in your test process.

Use your test plans as checklists for execution and link execution and results data to test steps.

Data management

Process and analyze your data accurately and efficiently.

Harmonize hundreds of file formats from heterogeneous test fields and analyze and visualize across tests.





Digitalize your test management with HyperTest Boost

You can seamlessly integrate HyperTest Boost into your existing IT infrastructure and into the context of existing applications. This allows you to create a flexible integration layer between enterprise IT systems (such as ERP, PLM, ALM) and test department systems and tools (including MATLAB, DIAdem, test bed automation or field monitoring systems, and IIoT solutions).

HyperTest Boost provides you with seamless communication and complete transparency of data flows, process information and interrelationships. This enables you to meet all your traceability and documentation requirements.

Browser-based and easy to use

With HyperTest Boost, you can edit and manage information from the entire test lifecycle and across all departments in an easy-to-use interface. The open, low-code platform lets your users drag and drop to configure custom views that best support their tasks. This enables them to drill down to the level of information that is relevant to their work.

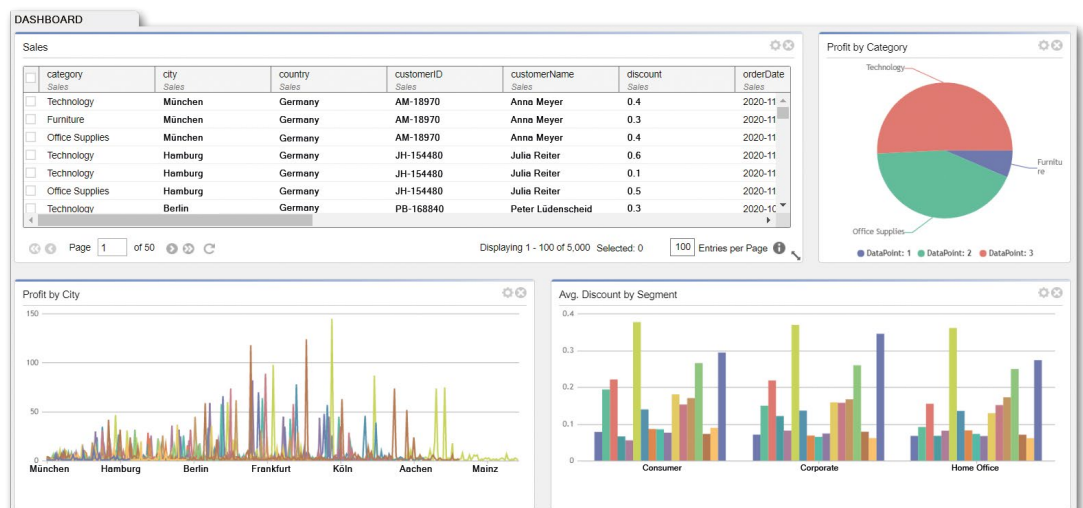
High-quality and accurate test management with combinable modules

HyperTest Boost comprises several apps that can be used individually or in combination. Even the basic module already includes all apps needed to efficiently manage test processes in the lab:

- Order management
- Measurement and results data management
- Extensive analysis and reporting functions

The optional order planning, request and requirement management, and resource management modules add valuable functionality to the base module. And on mobile devices, the HyperTest Companion app supports mobile operations in the test field.

Other optional add-on modules allow you to address even the most unusual or complex use cases - from comprehensive baselining and journaling capabilities for product lifecycle documentation to integration with data analysis platforms and tools.



Werum advises you on the selection of suitable modules to cover all your topics. This way you get a solution that is perfectly tailored to your needs. Together, the HyperTest Boost applications provide you with numerous additional functions to monitor and document the entire lifecycle of your tests. These additional applications give you the following options:

- Optimization of your demand, cost and implementation planning
- Monitoring of resource utilization and management of calibration information
- Configuration and display of dashboards and KPIs
- Asset tracking and recording of runtimes

Pre-defined functionality and interfaces enable rapid deployment of the solution. Thanks to the low-code platform's wide range of configuration options, you can customize and extend HyperTest Boost according to your needs. Of course, we also support you during the rollout and implementation phase so that you can quickly start using HyperTest Boost.

Additional features of HyperTest Boost

- Support for unlimited number of users, workstations and test equipment
- Order and test equipment history
- Integration of analysis tools
- Cloud-ready
- Secure and documented data access
- Role-specific views of information
- Management of additional files and documents
- Centralized and access-controlled storage
- Global search in all managed content
- Supports more than 1000 file formats
- Multilingual user interface
- Flexible thanks to easily extensible data model
- Customizable and interactive GUIs and dashboards

Werum Software & Systems

With a workforce of over 140, Werum Software & Systems AG is one of the largest independent employers for IT professionals in Germany. For more than 50 years, Werum has been implementing sophisticated software and systems for customers all over the world, among them many renowned companies from the automotive and aerospace industry as well as scientific institutions and public authorities.

Werum's activities focus on the support of customer-specific processes in the core areas of test data and information management, earth observation, eGovernment and enterprise information management. The software solutions are based on platforms specially developed for these areas.

Diversity, reliability, flexibility and fairness are part of our philosophy and create the basis for sustainable customer relations. Werum offers its international customers well-founded application know-how as well as the knowledge and experience gained in many years of implementing most diverse projects and IT solutions. Already in the run-up to project implementation Werum assists customers in advisory capacity with regard to any IT-related aspects of the specific task setting. Long-term maintenance and servicing of the solutions supplied are a matter of course for Werum.

Werum Software & Systems AG
Anna-Vogeley-Strasse 20
21337 Lueneburg, Germany

Phone +49 4131 8307-300
Fax +49 4131 8307-200

sales@werum.de
www.werum.de